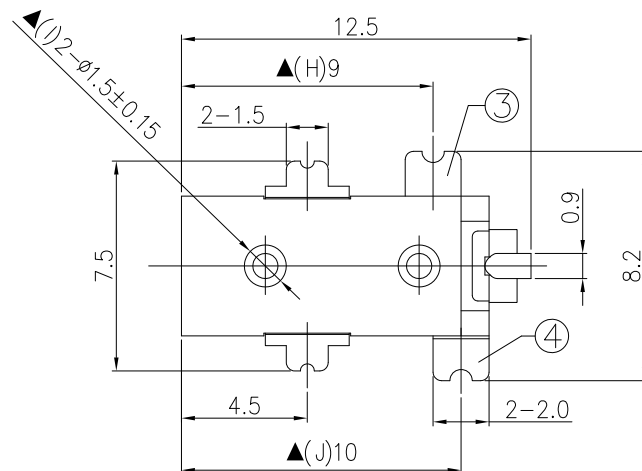
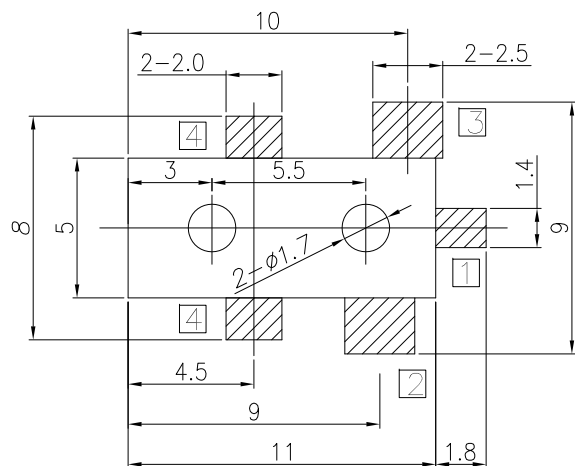


DC MATE PLUG

Specification:

1. Rating: DC 16V 2.5A
2. Contact Resistance: 0.05Ω Max.  
After Life Test: 0.10Ω Max.
3. Insulation Resistance: 100MΩ Min. (500V DC)  
After Life Test: 50MΩ Min.
4. Withstand Voltage: 500V AC.
5. Insertion and Extraction Force: 3N~30N.
6. Life Test: 5,000 Cycles Min.
7. Operation Temperature Range: -20°C~70°C.
8. Respiration Temperature Range: -40°C~85°C.



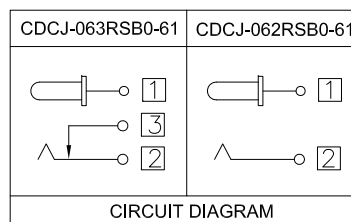
Part Number:

CDCJ-06XRSB0-61

DC Power Jack  
XX: Center Pin  
06:0.65mm

61: Product Number  
0: Black Color  
B: Ag Plating  
S: SMT Type  
R: Right Angle  
X: XPins

RECOMMENDED P. C. B. LAYOUT  
UNSPECIFIED TOLERANCE: ±0.05  
(COPPER-SIDED VIEW)



NO.	DESCRIPTION	QTY	MATERIAL	REMARK
5	SHELL	1	BRASS 0.4T	Silver Plating
4	SHUNT TERMINAL	1	BRASS 0.4T	Silver Plating
3	TIP SPRING	1	STAINLESS STEEL 0.25T	Silver Plating
2	CENTER PIN	1	BRASS	Silver Plating
1	HOUSING	1	PA9T, UL94 V-0	Black

REV	DATE	DESCRIPTION
A	04/18/11	RELEASED FOR PRODUCTION
UNLESS OTHERWISE SPECIFIED, DIMENSIONS ARE IN MM. TOLERANCES ARE:		
DECIMALS	ANGLES	
.X ± .38		± 3°
.XX ± .25		
.XXX ± .20		
DO NOT SCALE DRAWING		
SHEET 1 OF 1		
SCALE NONE		
DWG. NO. CDCJ-06X-S61		



DC Power Jack, 0.65mm, Right Angle, SMT Type