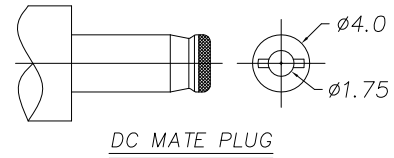


RECOMMENDED P. C. B. LAYOUT
UNSPECIFIED TOLERANCE: ±0.05
(BOTTOM VIEW)



CDCJ-163RDB0-39	CDCJ-162RDB0-39
∅1.65	∅1.65
CIRCUIT DIAGRAM	

Specification:

- Rating: DC 20V 2A.
- Contact Resistance: 0.03Ω Max.
After Life Test: 0.05Ω Max.
- Insulation Resistance: 100MΩ Min. (500V DC)
After Life Test: 50MΩ Min.
- Withstand Voltage: 500V AC.
- Insertion and Extraction Force: 3N~30N.
- Life Test: 5,000 Cycles Min.
- Operation Temperature Range: -20°C~70°C.
- Reservation Temperature Range: -40°C~85°C.

Part Number:

CDCJ-16XRDB0-39

DC Power Jack
XX: Center Pin
16:1.65mm

39: Product Number
0: Black Color
B: Ag Plating
D: DIP Type
R: Right Angle
2: 2Pins
3: 3Pins

NO.	DESCRIPTION	QTY	MATERIAL	REMARK
4	SHUNT TERMINAL	1	BRASS T=0.40	Silver Plating
3	TIP SPRING	1	PHOSPHOR BRONZE T=0.30	Silver Plating
2	CENTER PIN	1	BRASS	Silver Plating
1	HOUSING	1	PBT, UL94 V-0	Black

A	11/25/11	RELEASED FOR PRODUCTION	
REV	DATE	DESCRIPTION	
UNLESS OTHERWISE SPECIFIED, DIMENSIONS ARE IN MM TOLERANCES ARE:		 凱聯科技股份有限公司 Conn-Link Technology Inc.	
DECIMALS ANGLES			
.X ± .38	± 3°		
.XX ± .25			
.XXX ± .20			
DO NOT SCALE DRAWING		SHEET 1 OF 1	SCALE NONE
DWG. NO. CDCJ-16X-039		REV. A	