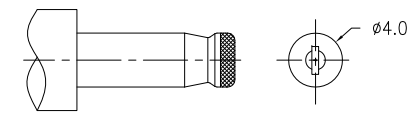


RECOMMENDED P. C. B. LAYOUT
 UNSPECIFIED TOLERANCE: ±0.05
 (Copper-sided VIEW)

Specification:

1. Rating: DC 18V 5A
2. Contact Resistance: 0.03Ω Max.
After Life Test: 0.05Ω Max.
3. Insulation Resistance: 100MΩ Min. (500V DC)
After Life Test: 50MΩ Min.
4. Withstand Voltage: 500V AC.
5. Insertion and Extraction Force: 3N~30N.
6. Life Test: 5,000 Cycles Min.
7. Operation Temperature Range: -20°C~70°C.
8. Respiration Temperature Range: -40°C~85°C.

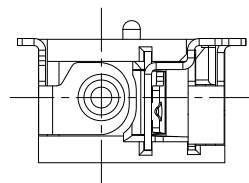
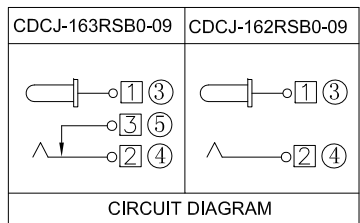


DC MATE PLUG

Part Number:

CDCJ-16XRSB0-09

- DC Power Jack
- XX: Center Pin
- 16:1.65mm
- 09: Product Number
- 0: Black Color
- B: Ag Plating
- S: SMT Type
- R: Right Angle
- 2: 2Pins
- 3: 3Pins



5	SHUNT TERMINAL	3	1	BRASS 0.3T	Silver Plating
4	TIP SPRING	2	1	PHOSPHOR BRONZE 0.3T	Silver Plating
3	CENTER PIN TERMINAL	1	1	BRASS 0.3T	Silver Plating
2	CENTER PIN	1	1	BRASS	CuSn/Ni Plating
1	HOUSING		1	PA9T, UL94 V-0	Black
NO.	DESCRIPTION	QTY		MATERIAL	REMARK

A	04/01/11	RELEASED FOR PRODUCTION				
REV	DATE	DESCRIPTION				
UNLESS OTHERWISE SPECIFIED, DIMENSIONS ARE IN MM. TOLERANCES ARE:		CAD GENERATED DRAWING, DO NOT MANUALLY UPDATE				
DECIMALS	ANGLES	APPROVALS	DATE	 凱聯科技股份有限公司 Conn-Link Technology Inc.		
.X ± .38	± 3°	DRAWN	Chris			04/01/11
.XX ± .25		CHECKED	Cindy			04/01/11
.XXX ± .20		APPV	Jason			04/01/11
DO NOT SCALE DRAWING		SHEET	1 OF 1			SCALE
		DWG. NO.	CDCJ-16X-009		REV. A	