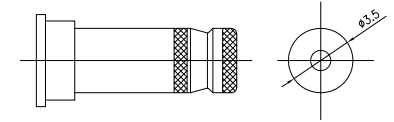
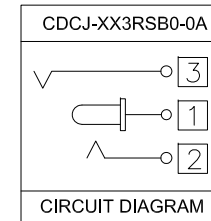


RECOMMENDED P. C. B. LAYOUT  
 UNSPECIFIED TOLERANCE:  $\pm 0.05$   
 (Copper-sided VIEW)

Part No.	CDCJ-103RSB0-0A	CDCJ-133RSB0-0A
PIN	$\phi 1.0$	$\phi 1.3$

**Specification:**

1. Rating: DC 30V 1A
2. Contact Resistance: 0.03Ω Max.  
After Life Test: 0.05Ω Max.
3. Insulation Resistance: 100MΩ Min. (250V DC)  
After Life Test: 50MΩ Min.
4. Withstand Voltage: 500V AC.
5. Insertion and Extraction Force: 3N~30N.
6. Life Test: 5,000 Cycles Min.
7. Operation Temperature Range:  $-20^{\circ}\text{C} \sim 70^{\circ}\text{C}$ .
8. Respiration Temperature Range:  $-40^{\circ}\text{C} \sim 85^{\circ}\text{C}$ .



DC MATE PLUG

**Part Number:**

**CDCJ-XX3RSB0-0A**

DC Power Jack  
 XX: Center Pin  
 10:1.00mm  
 13:1.30mm

0A: Product Number  
 0: Black Color  
 B: Ag Plating  
 S: SMT Type  
 R: Right Angle  
 3: 3Pins

NO.	DESCRIPTION	QTY	MATERIAL	REMARK
4	TIP SPRING	③	1	PHOSPHOR BRONZE Silver Plating
3	TIP SPRING	②	1	PHOSPHOR BRONZE Silver Plating
2	CENTER PIN	①	1	BRASS Silver Plating
1	HOUSING		1	PA9T, UL94 V-0 Black

A	04/18/12	RELEASED FOR PRODUCTION	
REV	DATE	DESCRIPTION	
UNLESS OTHERWISE SPECIFIED DIMENSIONS ARE IN MM TOLERANCES ARE:			
DECIMALS	ANGLES		
.X ± .38	± 3°		
.XX ± .25			
.XXX ± .20			
DO NOT SCALE DRAWING		SHEET 1 OF 1	SCALE NONE
		DWG. NO. CDCJ-XX3-00A	REV. A



DESCRIPTION DC Power Jack, 1.0mm or 1.3mm Center Pin, Right Angle, SMT, Ag Plating, Black Color