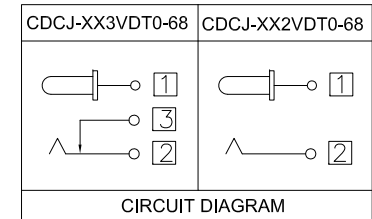
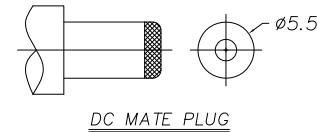


RECOMMENDED P. C. B. LAYOUT
 UNSPECIFIED TOLERANCE: ± 0.05
 (COPPER-SIDED VIEW)

Part No.	CDCJ-20XVDT0-68	CDCJ-25XVDT0-68
PIN	$\phi 2.0$	$\phi 2.5$

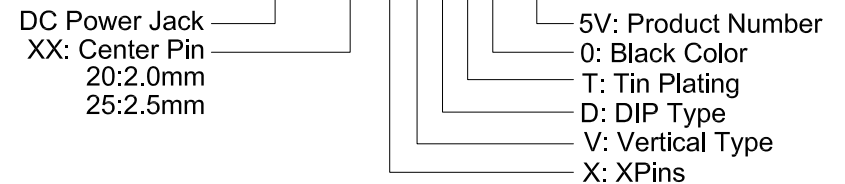


Specification:

1. Rating: DC 20V 2A.
2. Contact Resistance: 0.05Ω Max.
After Life Test: 0.10Ω Max.
3. Insulation Resistance: 100MΩ Min. (500V DC)
After Life Test: 50MΩ Min.
4. Withstand Voltage: 500V AC.
5. Insertion and Extraction Force: 3N~30N.
6. Life Test: 5,000 Cycles Min.
7. Operation Temperature Range: -20°C~70°C.
8. Respiration Temperature Range: -40°C~85°C.

Part Number:

CDCJ-XXXVDT0-68



6	SHUNT TERMINAL	3	1	BRASS	Tin Plating
5	TIP SPRING	2	1	STAINLESS STEEL	Silver Plating
4	CENTER PIN TERMINAL	1	1	BRASS	Tin Plating
3	CENTER PIN	1	1	BRASS	CuSn/Ninckel Plating
2	COVER		1	PF	Brown
1	HOUSING		1	PA66+15%GF, UL94HB	Black
NO.	DESCRIPTION	QTY		MATERIAL	REMARK

A	04/14/11	RELEASED FOR PRODUCTION	
REV	DATE	DESCRIPTION	
UNLESS OTHERWISE SPECIFIED, DIMENSIONS ARE IN MM. TOLERANCES ARE:			
DECIMALS	ANGLES	APPROVALS	
.X ± .38	± 3°	Chris	04/14/11
.XX ± .25		Cindy	04/14/11
.XXX ± .20		Jason	04/14/11
DO NOT SCALE DRAWING		SHEET 1 OF 1	SCALE NONE
		DWG. NO. CDCJ-XXX-680	REV. A



DC Power Jack, Vertical Type, DIP Type
 With Plastic Latched, Black Color