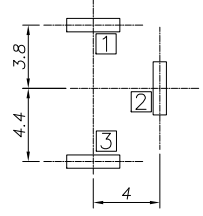
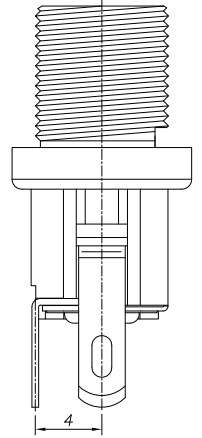
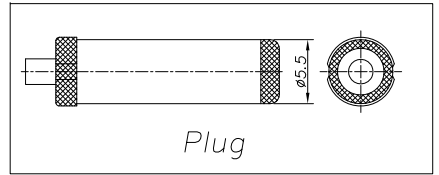
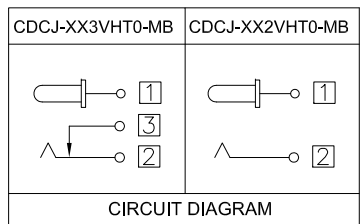


**Specification:**

1. Rating: DC 30V 3.0A
2. Contact Resistance: 0.03Ω Max.  
After Life Test: 0.05Ω Max.
3. Insulation Resistance: 100MΩ Min. (500V DC)  
After Life Test: 50MΩ Min.
4. Withstand Voltage: 500V AC.
5. Insertion and Extraction Force: 3N~30N.
6. Life Test: 5,000 Cycles Min.
7. Operation Temperature Range: -20°C~70°C.
8. Respiration Temperature Range: -40°C~85°C.



RECOMMENDED P. C. B. LAYOUT  
UNSPECIFIED TOLERANCE: ±0.05  
(Copper-Sided View)



| Part No. | CDCJ-20XVHT0-MB | CDCJ-23XVHT0-MB | CDCJ-25XVHT0-MB |
|----------|-----------------|-----------------|-----------------|
| PIN      | φ2.0            | φ2.35           | φ2.5            |

**Part Number:**

**CDCJ-XXXVHT0-MB**

DC Power Jack  
XX: Center Pin  
20:2.00mm  
23:2.35mm  
25:2.50mm

MB: Product Number  
0: Black Color  
T: Tin Plating  
H: DIP With Holes  
V: Vertical Type  
2: 2Pins  
3: 3Pins

| 9   | WASHER-2            | 1   | STEEL           | Nickel Plating |
|-----|---------------------|-----|-----------------|----------------|
| 8   | NUT                 | 1   | BRASS           | Nickel Plating |
| 7   | WASHER-1            | 1   | BAKELITE        |                |
| 6   | PIN                 | 1   | PHOSPHOR BRONZE | Nickel Plating |
| 5   | BUSHING             | 1   | BRASS           | Nickel Plating |
| 4   | SHUNT TERMINAL      | ③   | BRASS           | Cu/Sn Plating  |
| 3   | TIP SPRING          | ②   | PHOSPHOR BRONZE | Cu/Sn Plating  |
| 2   | CENTER PIN TERMINAL | ①   | BRASS           | Cu/Sn Plating  |
| 1   | HOUSING             | 1   | PBT, UL94 V-0   | Black          |
| NO. | DESCRIPTION         | QTY | MATERIAL        | REMARK         |

|   |            |                         |
|---|------------|-------------------------|
| A   | 01/04/12   | RELEASED FOR PRODUCTION |
| REV   | DATE       | DESCRIPTION             |
| UNLESS OTHERWISE SPECIFIED, DIMENSIONS ARE IN MM. TOLERANCES ARE: |            |                         |
| DECIMALS  | ANGLES     |                         |
| .X ± .38  |            | ± 3°                    |
| .XX ± .25   |            |                         |
| .XXX ± .20  |            |                         |
| DO NOT SCALE DRAWING  |            |                         |
| CAD GENERATED DRAWING, DO NOT MANUALLY UPDATE                     |            |                         |
| APPROVALS   | DATE       |                         |
| DRAWN Chris   | 01/04/12   |                         |
| CHECKED Cindy   | 01/04/12   |                         |
| APPV Jason  | 01/04/12   |                         |
| SHEET 1 OF 1  | SCALE NONE | DWG. NO. CDCJ-XXX-B5M   |
|   |            | REV. A                  |



DESCRIPTION DC Power Jack, 2.0mm, 2.35mm or 2.5mm Center Pin, Vertical, DIP With Holes, With Screw L=8.5mm, Black Color