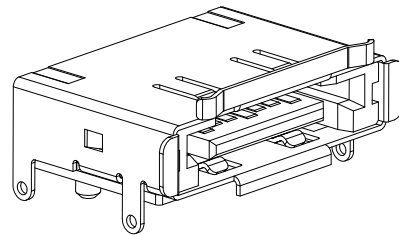
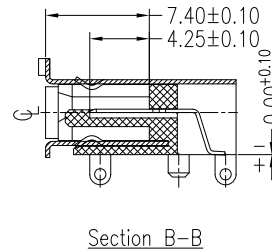
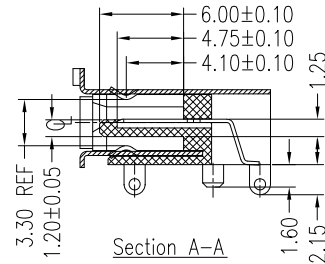
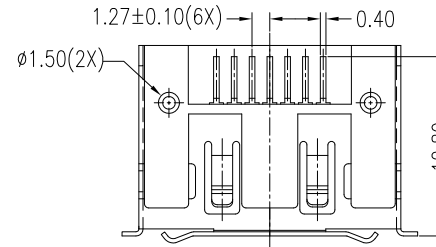
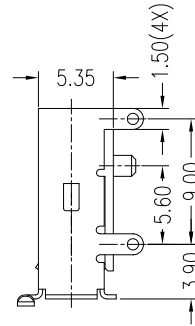


| PIN Signal Define | |
|-------------------|-------------|
| PIN NO. | Signal Name |
| S1 | GND |
| S2 | A+ |
| S3 | A- |
| S4 | GND |
| S5 | B- |
| S6 | B+ |
| S7 | GND |



NOTES:

1. Material:

Housing: LCP+50%G.F, UL 94V-0 Rated.
 Color: Black.
 Contact: Brass.
 Plating: Gold Plating over Nickel on Contact Area.
 Tin Plating on Solder Tail.
 Shell: Brass.
 Plating: Ni(40u" Min) Plating.

2. Mechanical:

Insertion Force: 40N Max.
 Withdrawal Force: 10N Min.
 Durability: 2500 Cycles

3. Electrical Specification:

Operation Voltage: 100VAC Max.
 Current Rating: 1.5 Ampere per Contact.
 Contact Resistance: 30mΩ Max.
 Insulation Resistance: 1000MΩ Min.
 Dielectric Withstanding Voltage: 500 VAC.

4. Environmental:

Operating Temperature: -55°C to +85°C

Part Number:

CEAT-M07RS30-B3

eSATA Series ———— 3: SMT, Standard Type
 M: Male Type ———— B: Small Spring on Bottom
 07: 7Pins ———— 0: Black Color
 R: Right Angle ———— 3: 15u" Plating
 ———— S: SMT Type

| A | 11/16/10 | RELEASED FOR PRODUCTION | |
|---|----------|---|------------|
| REV | DATE | DESCRIPTION | |
| UNLESS OTHERWISE SPECIFIED DIMENSIONS ARE IN MM TOLERANCES ARE: | | CAD GENERATED DRAWING, DO NOT MANUALLY UPDATE | |
| DECIMALS | ANGLES | APPROVALS | DATE |
| .X ± .38 | ± 3° | DRAWN Chris | 11/16/10 |
| .XX ± .25 | | CHECKED Cindy | 11/16/10 |
| .XXX ± .20 | | APPV Jason | 11/16/10 |
| DO NOT SCALE DRAWING | | SHEET 1 OF 1 | SCALE NONE |
| | | DWG. NO. CEAT-M07-S02 | REV. A |



DESCRIPTION
 eSATA 7P, Male, Right Angle, Standard SMT, Small Spring on Bottom