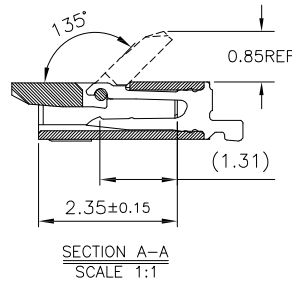
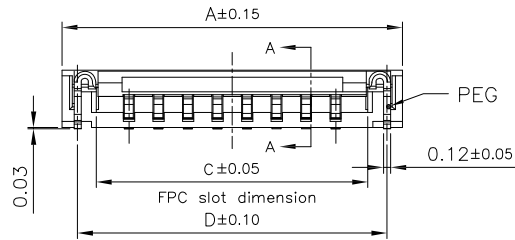
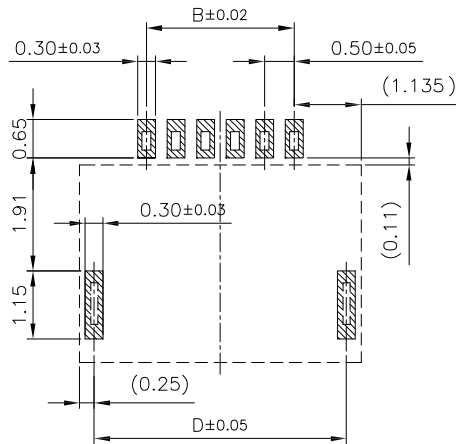


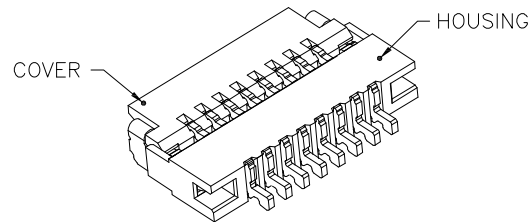
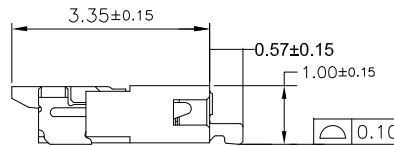
Applicable FPC



SECTION A-A
SCALE 1:1



RECOMMEND PCB LAYOUT
TOLERANCE: ±0.05



NOTES:

1. Materials

- Insulator: High-Temp Plastic, UL 94V-0 Rated. Color: White.
- Cover: High-Temp Plastic, UL 94V-0 Rated. Color: Brown.
- Contact: Copper Alloy.
- Plating: Gold Plating over Nickel.
- Peg: Copper Alloy.
- Plating: Tin Plating over Nickel.

2. Specification:

- Contact Resistance: 20m ohms Max
- Insulator Resistance: 500M ohms Min
- Current Rating: 0.4Amp Max.
- Voltage Rating: 50V AC/DC
- Operating Temperature: -25°C To +85°C


PIN NO.	DIM. A	DIM. B	DIM. C	DIM. D
4~N~60	NX0.5+1.77	NX0.5-0.50	NX0.5+0.60	NX0.5+1.27

Part Number:

CFPC-1XXPLG1-D3

FPC Connector Series
1: Pitch=0.5mm
XX: Poles No. (4~60Pins)
Contact Type
P: Piano Contact

3: Tape & Reel
D: Product Number
1: White Color
G: Gold Flash
Cover Type
L: Lip Cover

A	11/01/08	RELEASED FOR PRODUCTION								
REV	DATE	DESCRIPTION								
UNLESS OTHERWISE SPECIFIED, DIMENSIONS ARE IN MM. TOLERANCES ARE:		 <p>凱聯科技股份有限公司 Conn-Link Technology Inc.</p>								
DECIMALS	ANGLES									
.X ± .38	± 3°									
.XX ± .25										
.XXX ± .20		<table border="1"> <tr> <th>APPROVALS</th> <th>DATE</th> </tr> <tr> <td>DRAWN Chris</td> <td>11/01/08</td> </tr> <tr> <td>CHECKED Cindy</td> <td>11/01/08</td> </tr> <tr> <td>APPV Jason</td> <td>11/01/08</td> </tr> </table>	APPROVALS	DATE	DRAWN Chris	11/01/08	CHECKED Cindy	11/01/08	APPV Jason	11/01/08
APPROVALS	DATE									
DRAWN Chris	11/01/08									
CHECKED Cindy	11/01/08									
APPV Jason	11/01/08									
DO NOT SCALE DRAWING	SHEET 1 OF 1	SCALE NONE	DWG. NO. CFPC-1XX-PLD							

DESCRIPTION FPC ZIF Connector, 0.5mm Pitch, SMT, R/A Piano Contact, Lip Cover, H:1.0mm

REV. A