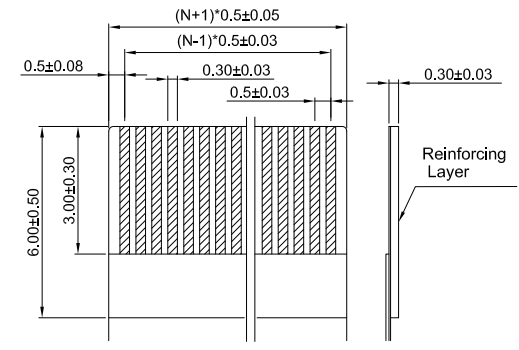
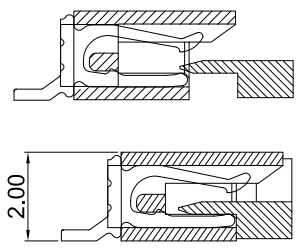
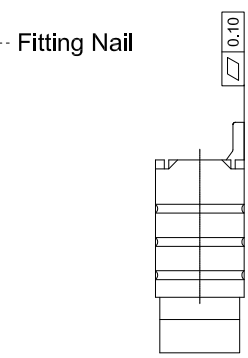


**PCB LAYOUT**



**RECOMMENDED FFC/FPC DIM.**



**SECTION A-A**

**NOTES:**

**1. Materials**

- Insulator: LCP (UL 94V-0)
- Latch: LCP (UL 94V-0)
- Contact: Copper Alloy
- Contact Plating: Tin Plating
- Fitting Nail: Cooper Alloy

**2. Specification:**

- Contact Resistance: 20m ohms Max
- Insulator Resistance: 500M ohms Min
- Current Rating: 0.4Amp Max.
- Voltage Rating: 50V AC/DC
- Operating Temperature: -25°C To +85°C

PIN NO.	DIM. A	DIM. B	DIM. C	DIM. D
4~N~60	N*0.5+5.6	N*0.5+4.6	N*0.5-0.50	N*0.5+0.60
<b>DIM. E</b>	4~N~34 E=5.25 ; 35~N~60 E=5.75			

**Part Number:**

**CFPC-1XXTDT1-B3**

- FPC Connector Series
- 1: Pitch=0.5mm
- XX: Poles No. (4~60Pins)
- Contact Type
- B: Bottom Contact
- T: Top Contact
- 3: Tape & Reel
- B: Product Number
- 1: White Color
- T: Tin Plating
- Cover Type
- D: Draw Cover

A	11/29/11	RELEASED FOR PRODUCTION			
REV	DATE	DESCRIPTION			
UNLESS OTHERWISE SPECIFIED DIMENSIONS ARE IN MM TOLERANCES ARE:		<b>凱聯科技股份有限公司</b> <b>Conn-Link Technology Inc.</b>			
DECIMALS	ANGLES				
.X ± .38	± 3°				
.XX ± .25					
.XXX ± .20		APPROVALS	DATE		
DO NOT SCALE DRAWING		DRAWN	Chris	11/29/11	
		CHECKED	Cindy	11/29/11	
		APPV	Jason	11/29/11	
SHEET	1 OF 1	SCALE	NONE	DWG. NO.	CFPC-1XX-TDB
				REV.	A