

Top Row			Bottom Row		
Pin NO.	Signal Type	Pin Name	Pin NO.	Signal Type	Pin Name
1	GND	GND	2	In	HotPlug Detect
3	Out	ML_Lane 0(p)	4	CONFIG	CONFIG1
5	Out	ML_Lane 0(n)	6	CONFIG	CONFIG2
7	GND	GND	8	GND	GND
9	Out	ML_Lane 1(p)	10	Out	ML_Lane 3(p)
11	Out	ML_Lane 1(n)	12	Out	ML_Lane 3(n)
13	GND	GND	14	GND	GND
15	Out	ML_Lane 2(p)	16	I/O	AUX_CH(p)
17	Out	ML_Lane 2(n)	18	I/O	AUX_CH(n)
19	GND	GND	20	PWR Out	DP_PWR

NOTES:

1. Material:

Body and Sheath: LCP+50%G.F, UL 94V-0 Rated.
Color: Black.
Insertion(Molding): LCP+30%G.F, UL 94V-0 Rated.
Color: Black.
Contact: Phosphor Bronze(C7025).
Plating: Gold Plating over Nickel on Contact Area.
Tin Plating on Solder Tail.
Shell: Brass.
Plating: Nickel(40u"~80u" Min) Plating.

2. Mechanical:

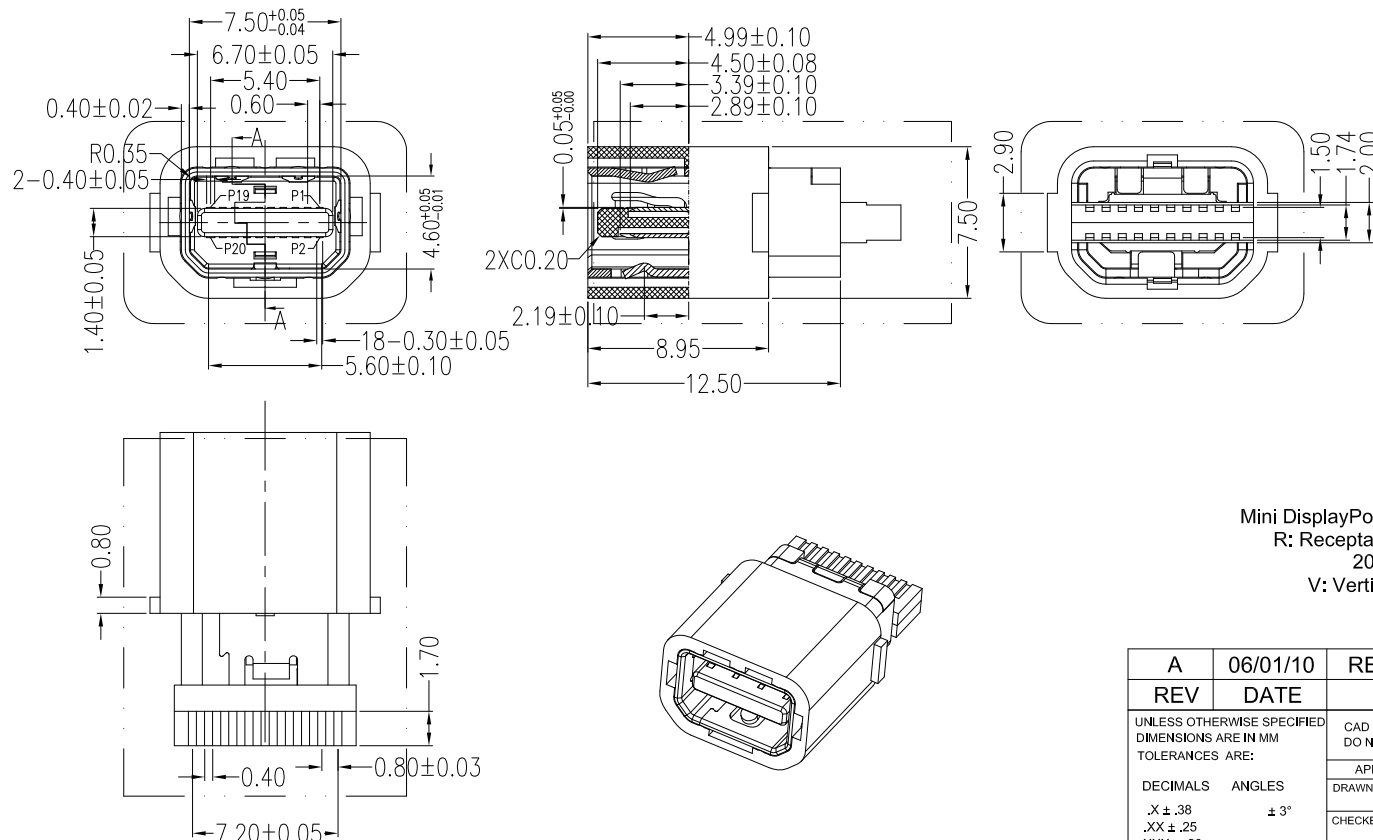
Insertion Force: 4.5Kgf Max.
Withdrawal Force: 1.0~4.0Kgf.
Durability: 10,000Cycles.

3. Electrical Specification:

Operation Voltage: 30VAC Max.
Current Rating: 0.5 Ampere per Contact.
Contact Resistance: 30mΩ Max.
Insulation Resistance: 100MΩ Min.
Dielectric Withstanding Voltage: 500V AC Min.

4. Environmental:

Operating Temperature: -40°C to +85°C



Part Number:

CMDP-R20V340-R7

Mini DisplayPort Series
R: Receptacle Type
20: 20Pins
V: Vertical Type
R7: Solder(Sector), With Shrouded
0: Black Color
4: 30u" Plating
3: Solder Type

A	06/01/10	RELEASED FOR PRODUCTION	
REV	DATE	DESCRIPTION	
UNLESS OTHERWISE SPECIFIED DIMENSIONS ARE IN MM TOLERANCES ARE:		CAD GENERATED DRAWING, DO NOT MANUALLY UPDATE	
DECIMALS ANGLES		APPROVALS	DATE
.X ± .38		DRAWN Chris	06/01/10
.XX ± .25		CHECKED Cindy	06/01/10
.XXX ± .20		APPV Jason	06/01/10
DO NOT SCALE DRAWING		SHEET 1 OF 1	SCALE NONE
		DWG. NO.	CMDP-R20-R07
		REV.	A



凱聯科技股份有限公司
Conn-Link Technology Inc.

DESCRIPTION
Mini DisplayPort Connector 20P, Receptacle,
Solder(Sector), With Shrouded, Black Color