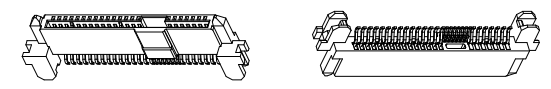
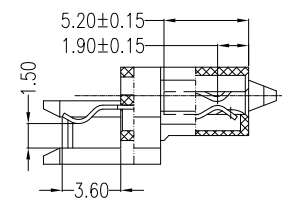
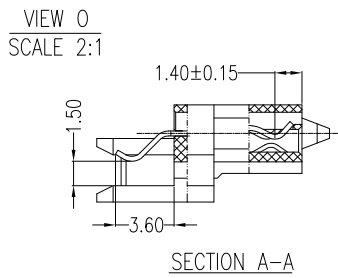
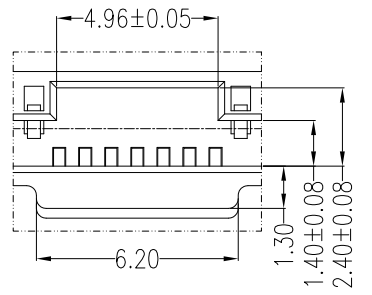


PCB LAYOUT(T=1.60mm)
COMPONENT SIDE

Power Segment				Signal Segment			
Pin NO.	Type	Name	Type	Pin NO.	Type	Name	Type
P1	V33	P9	V5	S1	Signal Ground	S8	Signal Ground
P2	V33	P10	Ground	S2	TP+	S9	TS+
P3	V33	P11	Ready Led	S3	TP-	S10	TS-
P4	Ground	P12	Ground	S4	Signal Ground	S11	Signal Ground
P5	Ground	P13	V12	S5	RP-	S12	RS-
P6	Ground	P14	V12	S6	RP+	S13	RS+
P7	V5	P15	V12	S7	Signal Ground	S14	Signal Ground
P8	V5						




NOTES:

- Material:**
Housing: LCP+50%G.F, UL 94V-0 Rated.
Color: Black.
Contact: Phosphor Bronze.
Plating: Gold Plating over Nickel on Contact Area.
Tin Plating on Solder Tail.
- Mechanical:**
Insertion Force: 25N Max.
Withdrawal Force: 5N Min.
Durability: 500 Cycles
- Electrical Specification:**
Current Rating: 1.5 Ampere per Contact.
Contact Resistance: 30mΩ Max.
Insulation Resistance: 1000MΩ Min.
Dielectric Withstanding Voltage: 500 VAC.
- Environmental:**
Operating Temperature: 0°C to +55°C

Part Number:

CSAS-F29SS40-F4

SAS Connector Series	Product Number:
F: Female Type	F4: for 1.6mm PCB Thickness
29: 7+7+15Pins	0: Black Color
S: Straddle Type	4: 30u" Plating
	S: SMT Type

A	09/09/10	RELEASED FOR PRODUCTION	
REV	DATE	DESCRIPTION	
UNLESS OTHERWISE SPECIFIED DIMENSIONS ARE IN MM TOLERANCES ARE:		 <p>凱聯科技股份有限公司 Conn-Link Technology Inc.</p>	
DECIMALS	ANGLES		
.X ± .38	± 3°		
.XX ± .25			
.XXX ± .20			
DO NOT SCALE DRAWING	SHEET 1 OF 1	SCALE NONE	DWG. NO. CSAS-F29-F04