

Signal Segment		Power Segment	
Pin NO.	Type	Pin NO.	Type
S1	GND	P1	V33
S2	A+	P2	V33
S3	A-	P3	V33
S4	GND	P4	GND
S5	B-	P5	GND
S6	B+	P6	GND
S7	GND	P7	V5
S8	GND	P8	V5
S9	A+	P9	V5
S10	A-	P10	GND
S11	GND	P11	DAS/DSS
S12	B-	P12	GND
S13	B+	P13	V12
S14	GND	P14	V12
		P15	V12

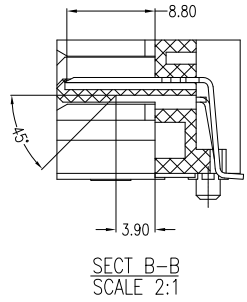
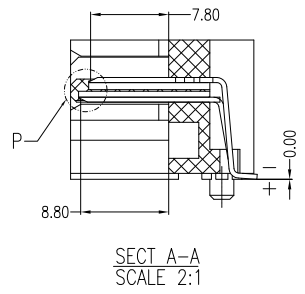
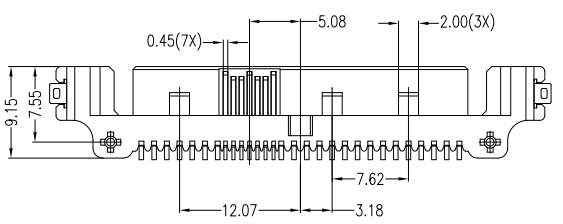
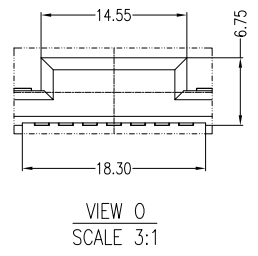
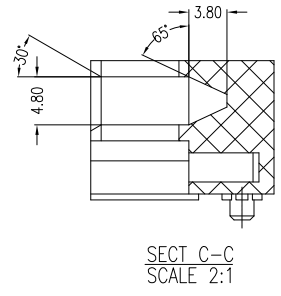
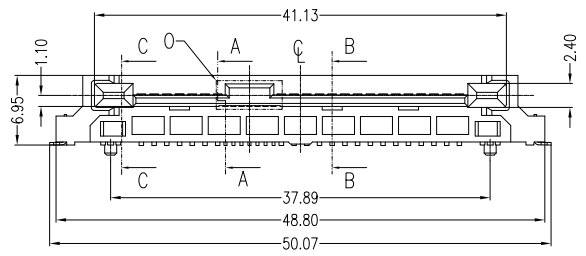
NOTES:

- Material:**
 Housing: LCP+50%G.F, UL 94V-0 Rated.
 Color: Black.
 Contact: Phosphor Bronze.
 Plating: Gold Plating over Nickel on Contact Area.
 Tin Plating on Solder Tail.
 Harpoon: Phosphor Bronze.
 Plating: Tin Plating over Nickel.

- Mechanical:**
 Insertion Force: 25N Max.
 Withdrawal Force: 5N Min.
 Durability: 500 Cycles

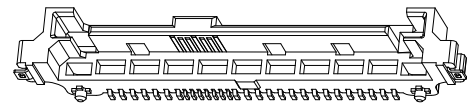
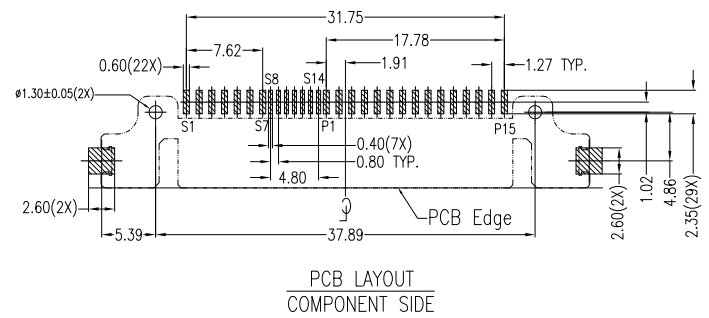
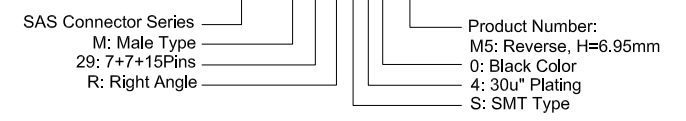
- Electrical Specification:**
 Current Rating: 1.5 Ampere per Contact.
 Contact Resistance: 30mΩ Max.
 Insulation Resistance: 1000MΩ Min.
 Dielectric Withstanding Voltage: 500 VAC.

- Environmental:**
 Operating Temperature: 0°C to +55°C



Part Number:

CSAS-M29RS40-M5



A	09/09/10	RELEASED FOR PRODUCTION	
REV	DATE	DESCRIPTION	
UNLESS OTHERWISE SPECIFIED DIMENSIONS ARE IN MM TOLERANCES ARE:		CAD GENERATED DRAWING, DO NOT MANUALLY UPDATE	
DECIMALS	ANGLES	APPROVALS	DATE
.X ± .38	± 3°	DRAWN	09/09/10
.XX ± .25		CHECKED	09/09/10
.XXX ± .20		APPV	09/09/10
DO NOT SCALE DRAWING		SHEET	SCALE
		1 OF 1	NONE
		DWG. NO.	REV.
		CSAS-M29-M05	A



DESCRIPTION SAS Connector, 7+7+15P Male, Right Angle Reverse Type, SMD, H=6.95mm Height