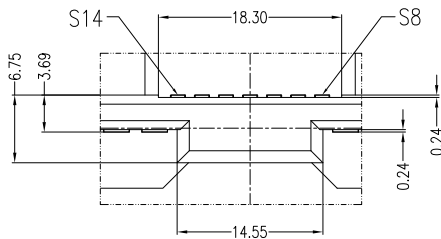


SECT A-A



VIEW 0
SCALE 3:1

Pin NO.	Type
S1	GND
S2	A+
S3	A-
S4	GND
S5	B-
S6	B+
S7	GND
S8	GND
S9	A+
S10	A-
S11	GND
S12	B-
S13	B+
S14	GND

Pin NO.	Type
P1	V33
P2	V33
P3	V33
P4	GND
P5	GND
P6	GND
P7	V5
P8	V5
P9	V5
P10	GND
P11	DAS/DSS
P12	GND
P13	V12
P14	V12
P15	V12

NOTES:

1. Material:

Housing: LCP+50%G.F, UL 94V-0 Rated.
 Color: Black.
 Contact: Phosphor Bronze.
 Plating: Gold Plating over Nickel on Contact Area.
 Tin Plating on Solder Tail.

2. Mechanical:

Insertion Force: 25N Max.
 Withdrawal Force: 5N Min.
 Durability: 500 Cycles

3. Electrical Specification:

Current Rating: 1.5 Ampere per Contact.
 Contact Resistance: 30mΩ Max.
 Insulation Resistance: 1000MΩ Min.
 Dielectric Withstanding Voltage: 500 VAC.

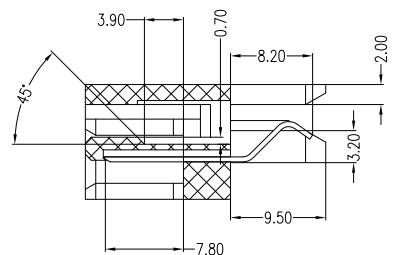
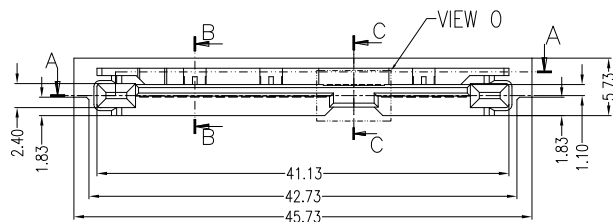
4. Environmental:

Operating Temperature: 0°C to +55°C

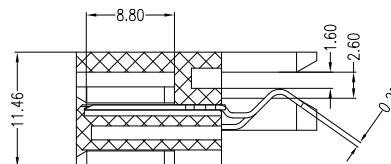
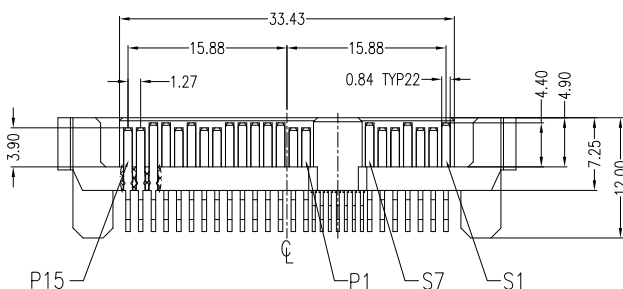
Part Number:

CSAS-M29SS40-M4

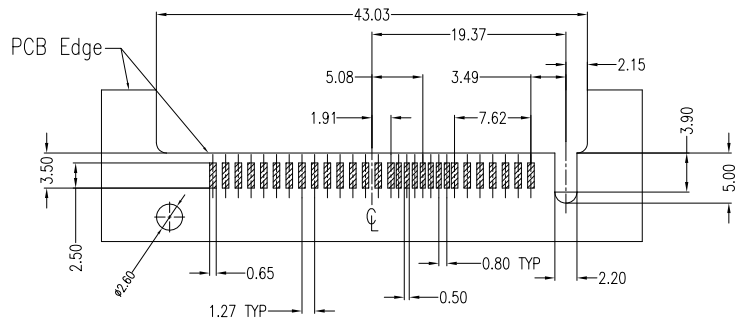
SAS Connector Series M: Male Type 29: 7+7+15Pins S: Straddle Type Product Number: M4: for 1.0mm PCB Thickness 0: Black Color 4: 30u" Plating S: SMT Type



SECT B-B
SCALE 2:1



SECT C-C
SCALE 2:1



P.C.B LAYOUT (T=1.00mm)
TOP VIEW

A	01/13/10	RELEASED FOR PRODUCTION	
REV	DATE	DESCRIPTION	
UNLESS OTHERWISE SPECIFIED DIMENSIONS ARE IN MM TOLERANCES ARE:		CAD GENERATED DRAWING, DO NOT MANUALLY UPDATE	
DECIMALS	ANGLES	APPROVALS	DATE
.X ± .38	± 3°	DRAWN	Chris 01/13/10
.XX ± .25		CHECKED	Cindy 01/13/10
.XXX ± .20		APPV	Jason 01/13/10
DO NOT SCALE DRAWING		SHEET	1 OF 1
		SCALE	NONE
		DWG. NO.	CSAS-M29-M04
		REV.	A



DESCRIPTION SAS Connector, 7+7+15P Male, Straddle Type SMD, for 1.0mm PCB Thickness