

Signal Segment		Power Segment	
Pin NO.	Type	Pin NO.	Type
S1	GND	P1	V33
S2	A+	P2	V33
S3	A-	P3	V33
S4	GND	P4	GND
S5	B-	P5	GND
S6	B+	P6	GND
S7	GND	P7	V5
S8	GND	P8	V5
S9	A+	P9	V5
S10	A-	P10	GND
S11	GND	P11	DAS/DSS
S12	B-	P12	GND
S13	B+	P13	V12
S14	GND	P14	V12
		P15	V12

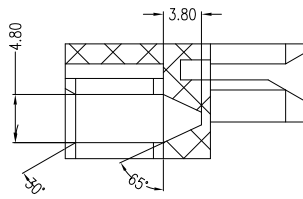
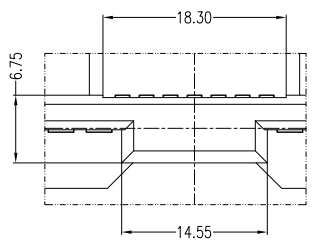
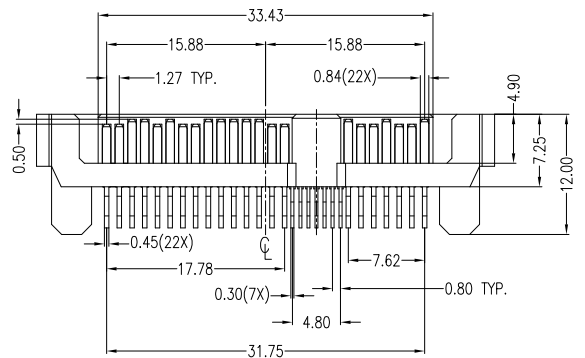
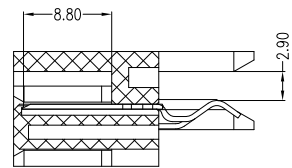
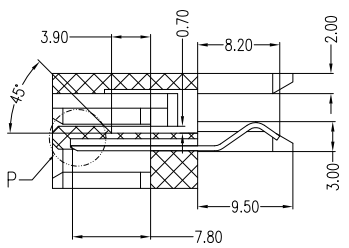
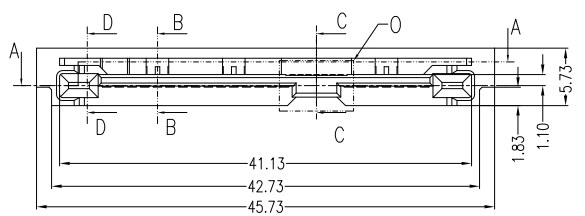
NOTES:

- Material:**
Housing: LCP+50%G.F, UL 94V-0 Rated.
Color: Black.
Contact: Phosphor Bronze.
Plating: Gold Plating over Nickel on Contact Area.
Tin Plating on Solder Tail.

- Mechanical:**
Insertion Force: 25N Max.
Withdrawal Force: 5N Min.
Durability: 500 Cycles

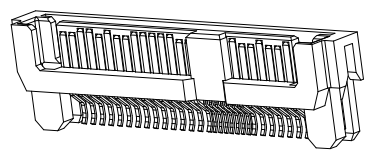
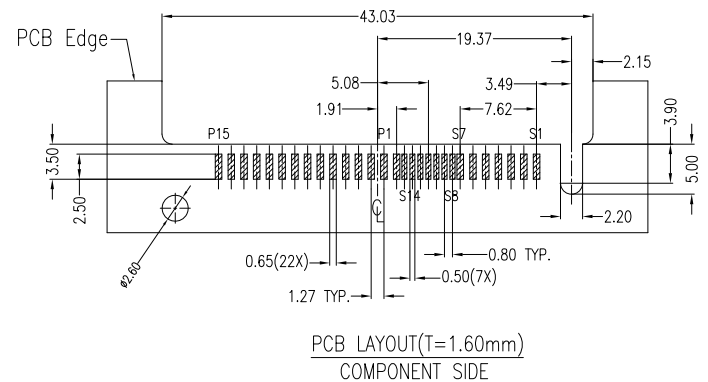
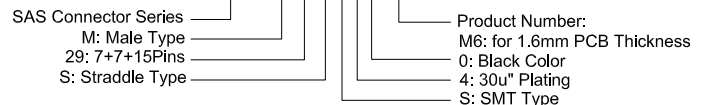
- Electrical Specification:**
Current Rating: 1.5 Ampere per Contact.
Contact Resistance: 30mΩ Max.
Insulation Resistance: 1000MΩ Min.
Dielectric Withstanding Voltage: 500 VAC.

- Environmental:**
Operating Temperature: 0°C to +55°C



Part Number:

CSAS-M29SS40-M6



A	09/13/10	RELEASED FOR PRODUCTION	
REV	DATE	DESCRIPTION	
UNLESS OTHERWISE SPECIFIED DIMENSIONS ARE IN MM TOLERANCES ARE:		CAD GENERATED DRAWING, DO NOT MANUALLY UPDATE	
DECIMALS	ANGLES	APPROVALS	DATE
.X ± .38	± 3°	DRAWN	Chris 09/13/10
.XX ± .25		CHECKED	Cindy 09/13/10
.XXX ± .20		APPV	Jason 09/13/10
DO NOT SCALE DRAWING	SHEET 1 OF 1	SCALE NONE	DWG. NO. CSAS-M29-M06
			REV. A



DESCRIPTION: SAS Connector, 7+7+15P Male, Straddle Type SMD, for 1.6mm PCB Thickness

A

B

C

D

A

B

C

D