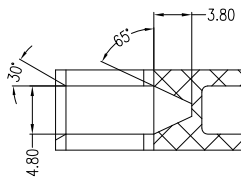
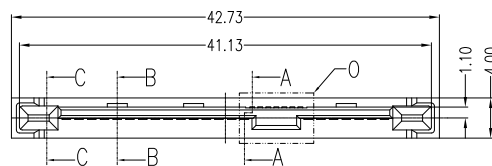


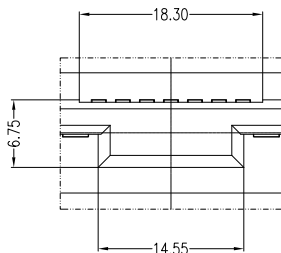
VIEW P
SCALE 6:1

Signal Segment	
Pin NO.	Type
S1	GND
S2	A+
S3	A-
S4	GND
S5	B-
S6	B+
S7	GND
S8	GND
S9	A+
S10	A-
S11	GND
S12	B-
S13	B+
S14	GND

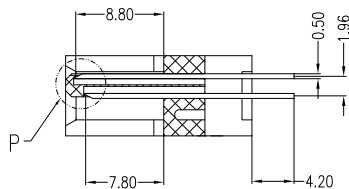
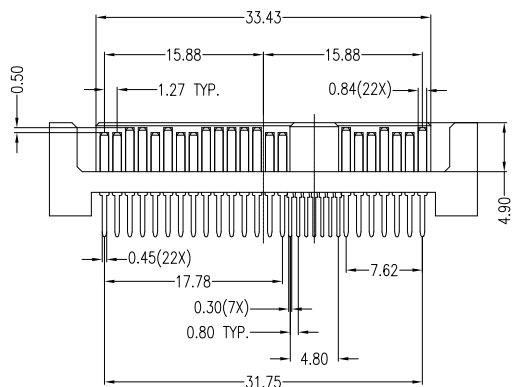
Power Segment	
Pin NO.	Type
P1	V33
P2	V33
P3	V33
P4	GND
P5	GND
P6	GND
P7	V5
P8	V5
P9	V5
P10	GND
P11	DAS/DSS
P12	GND
P13	V12
P14	V12
P15	V12



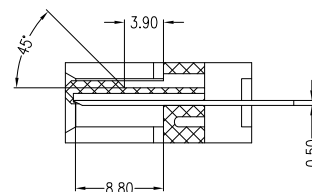
SECT C-C
SCALE 2:1



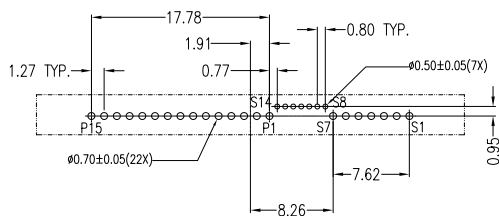
VIEW O
SCALE 3:1



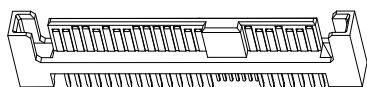
SECT A-A
SCALE 2:1



SECT B-B
SCALE 2:1



PCB LAYOUT(T=1.60mm)
COMPONENT SIDE



NOTES:

1. Material:

Housing: LCP+50%G.F, UL 94V-0 Rated.
Color: Black.
Contact: Phosphor Bronze.
Plating: Gold Plating over Nickel on Contact Area.
Tin Plating on Solder Tail.

2. Mechanical:

Insertion Force: 25N Max.
Withdrawal Force: 5N Min.
Durability: 500 Cycles

3. Electrical Specification:

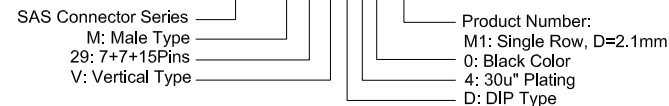
Current Rating: 1.5 Ampere per Contact.
Contact Resistance: 30mΩ Max.
Insulation Resistance: 1000MΩ Min.
Dielectric Withstanding Voltage: 500 VAC.

4. Environmental:

Operating Temperature: 0°C to +55°C

Part Number:

CSAS-M29VD40-M1



A	11/08/10	RELEASED FOR PRODUCTION	
REV	DATE	DESCRIPTION	
UNLESS OTHERWISE SPECIFIED DIMENSIONS ARE IN MM TOLERANCES ARE:		CAD GENERATED DRAWING, DO NOT MANUALLY UPDATE	
DECIMALS	ANGLES	APPROVALS	DATE
.X ± .38	± 3°	DRAWN Chris	11/08/10
.XX ± .25		CHECKED Cindy	11/08/10
.XXX ± .20		APPV Jason	11/08/10
DO NOT SCALE DRAWING	SHEET 1 OF 1	SCALE NONE	DWG. NO. CSAS-M29-M01
		DESCRIPTION SAS Connector, 7+7+15P Male, Vertical Type Single Row DIP, Pin Length=2.1mm	
		REV. A	

