

| Pin Number | Signal Name | Pin Number | Power Line Designation |
|------------|-------------|------------|------------------------|
| S1 | GND | P1 | DP |
| S2 | A+ | P2 | +5V |
| S3 | A- | P3 | +5V |
| S4 | GND | P4 | MD |
| S5 | B- | P5 | GND |
| S6 | B+ | P6 | GND |
| S7 | GND | | |

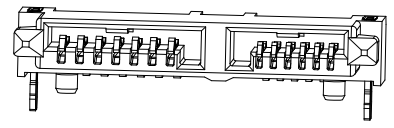
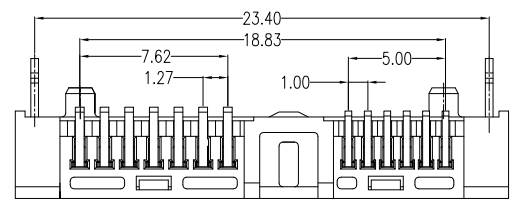
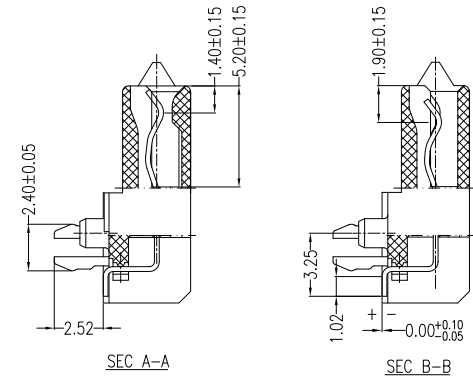
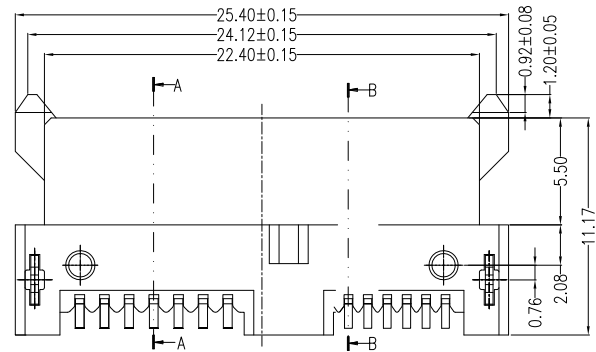
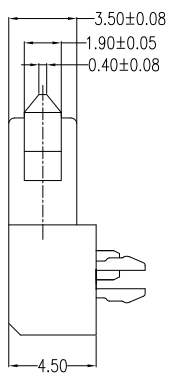
NOTES:

- Material:**
 Housing: LCP+50%G.F, UL 94V-0 Rated.
 Color: Black.
 Contact: Phosphor Bronze.
 Plating: Gold Plating over Nickel on Contact Area.
 Tin Plating on Solder Tail.
 Harpoon: Brass.
 Plating: Tin Plating over Nickel.

- Mechanical:**
 Insertion Force: 45N Max.
 Withdrawal Force: 10N Min.
 Durability: 500 Cycles

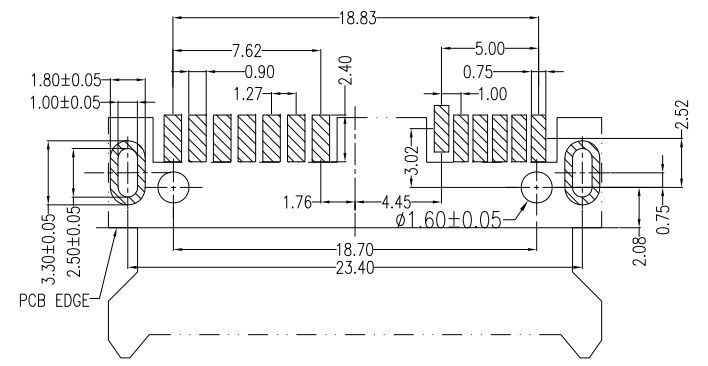
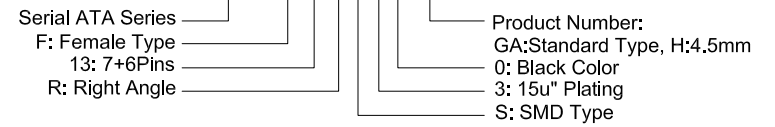
- Electrical Specification:**
 Operation Voltage: 100VAC Max.
 Current Rating: 1.5 Ampere per Contact.
 Contact Resistance: 30mΩ Max.
 Insulation Resistance: 1000MΩ Min.
 Dielectric Withstanding Voltage: 500 VAC.

- Environmental:**
 Operating Temperature: -55°C to +85°C



Part Number:

CSAT-F13RS30-GA



PCB LAYOUT(T=1.20)
COMPONENT SIDE

| | | | | | |
|----------------------|----------|---|--------------|-------------|--------|
| A | 08/12/10 | RELEASED FOR PRODUCTION | | DESCRIPTION | |
| REV | DATE | UNLESS OTHERWISE SPECIFIED DIMENSIONS ARE IN MM TOLERANCES ARE: | | | |
| | | APPROVALS | | DATE | |
| | | DRAWN | Chris | 08/12/10 | |
| | | CHECKED | Cindy | 08/12/10 | |
| | | APPV | Jason | 08/12/10 | |
| DO NOT SCALE DRAWING | | SHEET | 1 OF 1 | SCALE | NONE |
| | | DWG. NO. | CSAT-F13-G0A | | REV. A |



Slim Line SATA 7+6P Female, Right Angle Standard Type, SMT, H:4.5mm, W/Post