

Signal Segment	
Name	Type
S1	GND
S2	A+
S3	A-
S4	GND
S5	B-
S6	B+
S7	GND

Power Segment	
Name	Type
P1	V33
P2	V33
P3	V33
P4	GND
P5	GND
P6	GND
P7	V5
P8	V5
P9	V5
P10	GND
P11	DAS/DSS
P12	GND
P13	V12
P14	V12
P15	V12

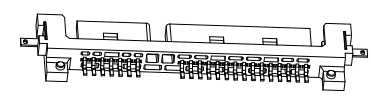
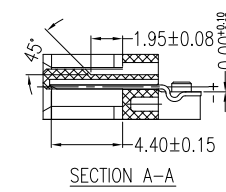
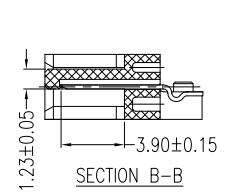
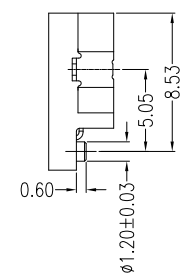
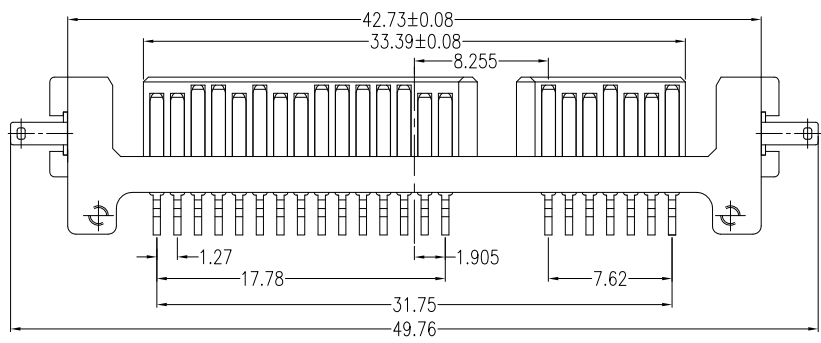
NOTES:

- Material:**
 Housing: LCP+50%G.F, UL 94V-0 rated.
 Color: Black.
 Contact: Brass.
 Plating: Gold plating over Nickel(40~80u") on contact area; Tin plating(100~250u") on solder tail.
 Harpoon: Brass.
 Plating: Tin plating(100~250u") over Nickel(40~80u").

- Mechanical:**
 Insertion Force: 45N max.
 Withdrawal Force: 10N min.
 Durability: 500 cycles

- Electrical Specification:**
 Current Rating: 1.5 Ampere per contact;
 Contact Resistance: 30mΩ max.
 Insulation Resistance: 100MΩ min.
 Dielectric Withstanding Voltage: 500 V AC.

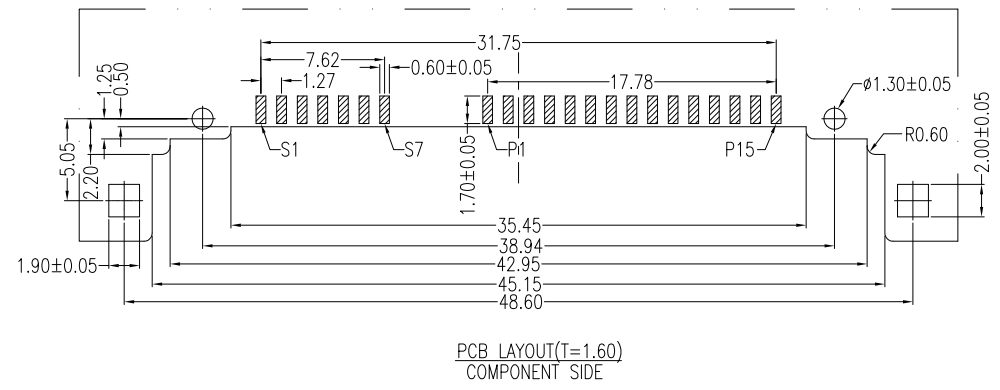
- Environmental:**
 Operating Temperature: -55°C to +85°C



Part Number:

CSAT-M221S 30-R7

- Serial ATA Series
- M: Male Type
- 22: 7+15Pins
- 1: Subside Type
- R7: Reverse Subside Type
- S: Standard Type
- 0: Black Color
- 3: 15u" Plating
- S: SMT Type



A	05/18/10	RELEASED FOR PRODUCTION	
REV	DATE	DESCRIPTION	
UNLESS OTHERWISE SPECIFIED, DIMENSIONS ARE IN MM. TOLERANCES ARE:		<p>Serial ATA 7+15P, Male, Reverse Subside Type, SMT</p>	
DECIMALS	ANGLES		
.X ± .38	± 3°		
.XX ± .25			
.XXX ± .20			
DO NOT SCALE DRAWING	SHEET 1 OF 1	SCALE NONE	DWG. NO. CSAT-M22-0C7