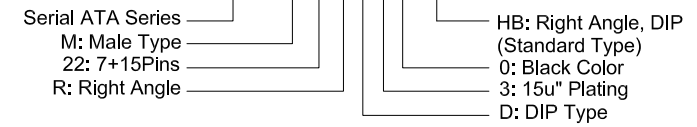



**NOTES:**

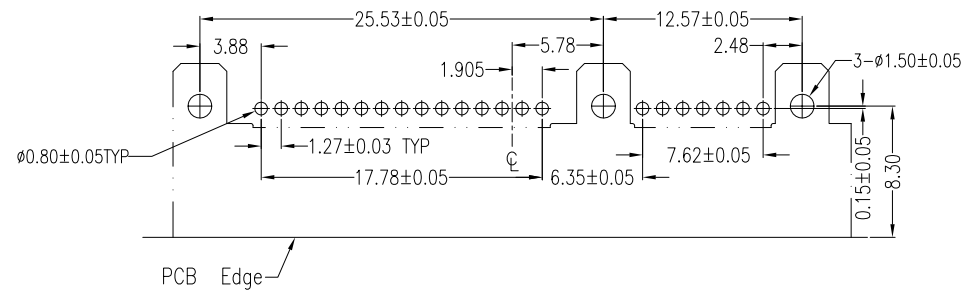
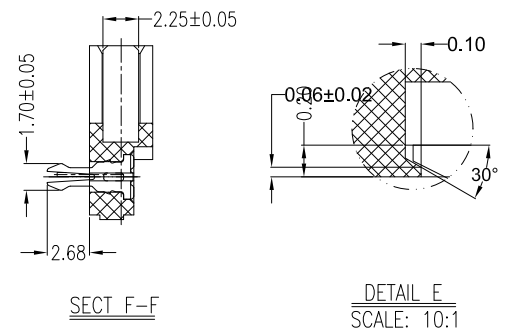
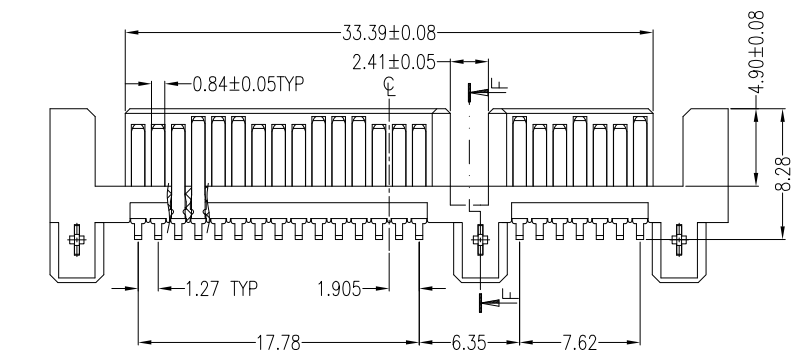
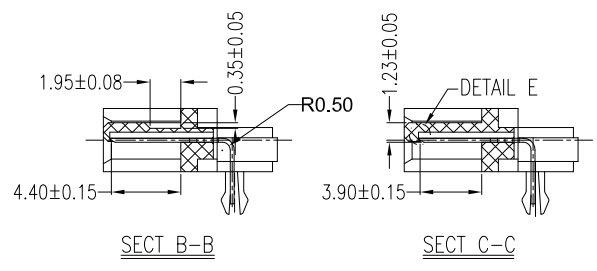
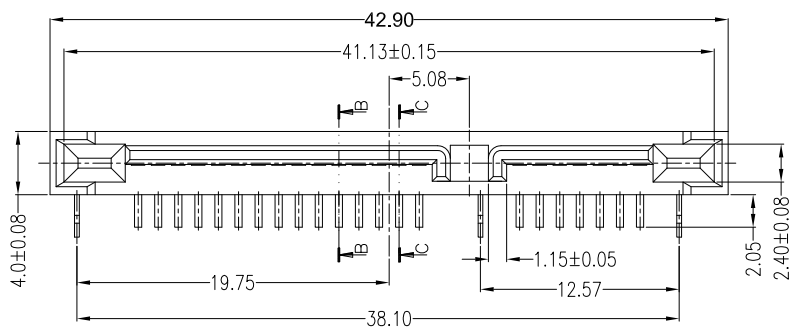
- Material:**  
 Housing: LCP+50%G.F, UL 94V-0 Rated.  
 Color: Black.  
 Contact: Phosphor Bronze.  
 Plating: Gold Plating over Nickel on Contact Area.  
 Tin Plating on Solder Tail.  
 Harpoon: Brass.  
 Plating: Tin Plating over Nickel.
- Mechanical:**  
 Insertion Force: 45N Max.  
 Withdrawal Force: 10N Min.  
 Durability: 500 Cycles
- Electrical Specification:**  
 Operation Voltage: 100VAC Max.  
 Current Rating: 1.5 Ampere per Contact.  
 Contact Resistance: 30mΩ Max.  
 Insulation Resistance: 1000MΩ Min.  
 Dielectric Withstanding Voltage: 500 VAC.
- Environmental:**  
 Operating Temperature: -55°C to +85°C

**Part Number:**

**CSAT-M22RD30-HB**



A		01/21/08		RELEASED FOR PRODUCTION	
REV		DATE		DESCRIPTION	
UNLESS OTHERWISE SPECIFIED, DIMENSIONS ARE IN MM. TOLERANCES ARE:		CAD GENERATED DRAWING, DO NOT MANUALLY UPDATE		 <b>凱聯科技股份有限公司</b> Conn-Link Technology Inc.	
DECIMALS		ANGLES			
.X ± .38		± 3°			
.XX ± .25					
.XXX ± .20				DESCRIPTION	
DO NOT SCALE DRAWING		SHEET 1 OF 1		SCALE NONE	
		DWG. NO.		CSAT-M22-0HB	
		REV.		A	



P.C.B. Layout(T=1.6mm)  
TOP VIEW