

Signal Segment	
Name	Type
S1	GND
S2	A+
S3	A-
S4	GND
S5	B-
S6	B+
S7	GND

Power Segment	
Name	Type
P1	V33
P2	V33
P3	V33
P4	GND
P5	GND
P6	GND
P7	V5
P8	V5
P9	V5
P10	GND
P11	DAS/DSS
P12	GND
P13	V12
P14	V12
P15	V12

**NOTES:**

**1. Material:**

Housing: LCP+50%G.F, UL 94V-0 rated.  
 Color: Black.  
 Contact: Brass.  
 Plating: Gold plating over Nickel(40~80u") on contact area;  
 Tin plating(100u") on solder tail;  
 Ni (40u") underplating overall.

**2. Mechanical:**

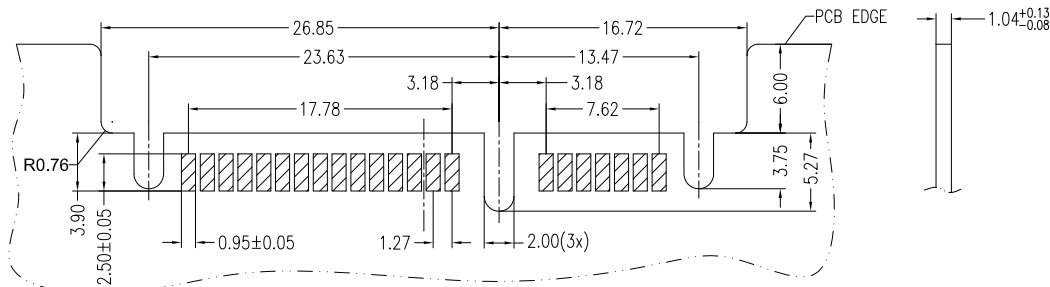
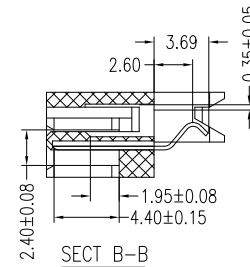
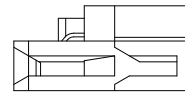
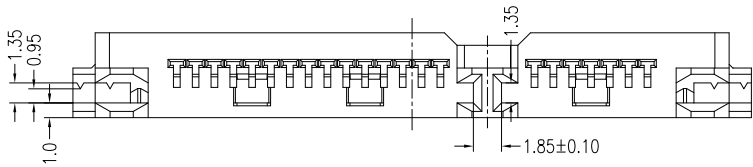
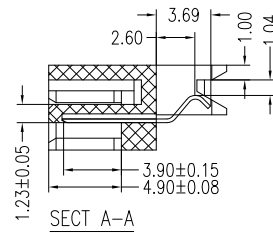
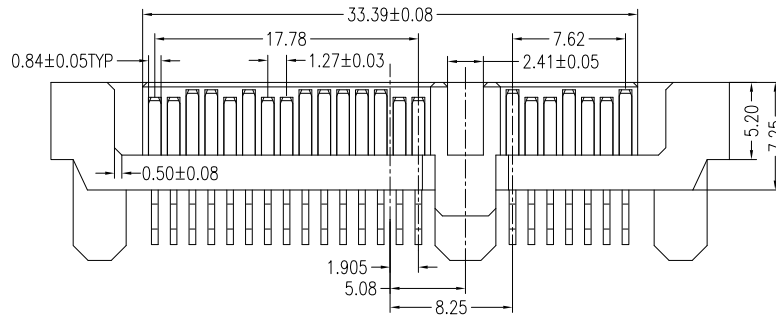
Insertion Force: 45N max.  
 Withdrawal Force: 10N min.  
 Durability: 500 cycles

**3. Electrical Specification:**

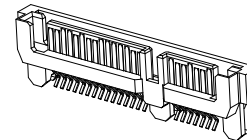
Current Rating: 1.5 Ampere per contact;  
 Contact Resistance: 30mΩ max.  
 Insulation Resistance: 1000MΩ min.  
 Dielectric Withstanding Voltage: 500 V AC.

**4. Environmental:**

Operating Temperature: -55°C to +85°C




P.C.B. LAYOUT  
COMPONENT SIDE



**Part Number:**

**CSAT-M22SS30-HC**

Serial ATA Series  
 M: Male Type  
 22: 7+15Pins  
 S: Straddle Type  
 HC: 1.0mm PCB  
 0: Black Color  
 3: 15u" Plating  
 S: SMT Type

A	01/11/11	RELEASED FOR PRODUCTION		DESCRIPTION	
REV	DATE	DESCRIPTION			
UNLESS OTHERWISE SPECIFIED DIMENSIONS ARE IN MM TOLERANCES ARE:		CAD GENERATED DRAWING, DO NOT MANUALLY UPDATE			
DECIMALS	ANGLES	APPROVALS	DATE	 <b>凱聯科技股份有限公司</b> <b>Conn-Link Technology Inc.</b>	
.X ± .38	± 3°	DRAWN	Chris		
.XX ± .25		CHECKED	Cindy		
.XXX ± .20		APPV	Jason		
DO NOT SCALE DRAWING		SHEET	1 OF 1	SCALE	NONE
		DWG. NO.	CSAT-M22-0HC		REV.
				A	