

NOTES:

1. eSATA Material:

- Housing: Nylon 46, UL 94-0 Rated.
- Color: Red.
- Contact: Brass.
- Plating: Gold Plating over Nickel on Contact Area.
- Tin Plating on Solder Tail.
- Shell: SUS304.

2. eSATA Electrical Specification:

- Operation Voltage: 100VAC Max.
- Current Rating: 1.5 Ampere per Contact.
- Contact Resistance: 30mΩ Max.
- Insulation Resistance: 1000MΩ Min.
- Dielectric Withstanding Voltage: 500 VAC.

3. USB Material:

- Housing: Nylon 66, UL 94-0 Rated.
- Retainer: Nylon 66, UL 94-0 Rated.
- Color: Black.
- Contact: Phosphor Bronze.
- Plating: Gold Plating over Nickel on Contact Area.
- Tin Plating on Solder Tail.
- Shell(Inside): SUS304.
- Shell(Outside): Brass, Nickel Plating.

4. USB Electrical Specification:

- Rated Voltage and Current: 1.5A at 250VAC Min.
- Contact Resistance: 30mΩ Max.
- Insulation Resistance: 1000MΩ Min.
- Dielectric Withstanding Voltage: 500 VAC for 1Minute.

5. Environmental:

- Operating Temperature: -55°C to +125°C

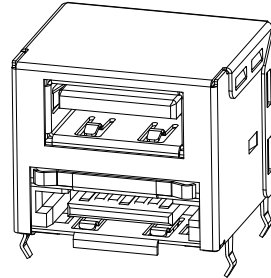
Part Number:

CUES-M112DGR-1X

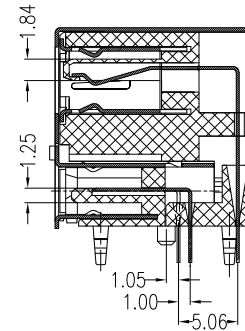
- | | | | | | | | |
|--------------------|--|--|--|--|--|--|-----------------------------|
| USB + eSATA Series | | | | | | | |
| M: Male | | | | | | | 1: DIP 3.1mm; 2: DIP 2.15mm |
| 11: 4+7P | | | | | | | 1: 1*USB + 1*eSATA |
| 2: Stacked Type | | | | | | | R: Red Color |
| D: DIP Type | | | | | | | G: Gold Flash |

Pin Number	Signal Name
U1	VBUS
U2	D-
U3	D+
U4	GDN

Pin Number	Signal Name
S1	GND
S2	A+
S3	A-
S4	GND
S5	B-
S6	B+
S7	GND



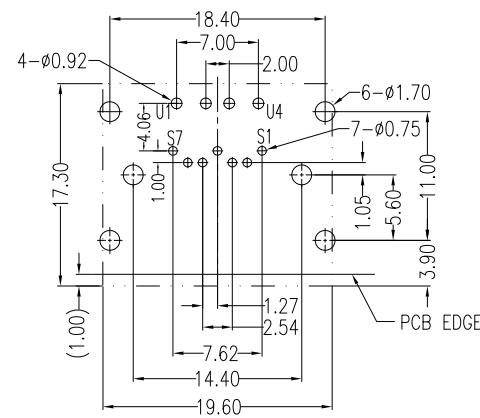
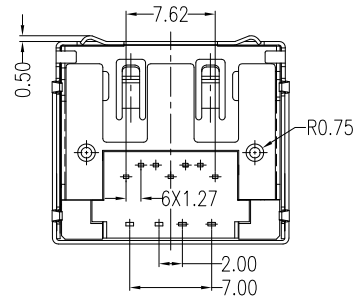
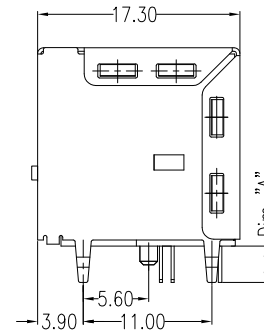
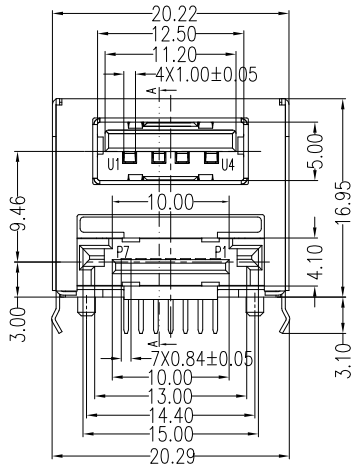
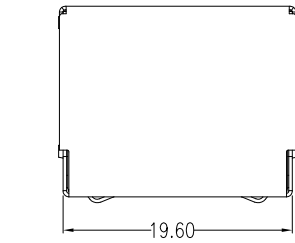
3D Drawing



SECT A-A

Unit:mm

Part Number	Dim "A"
CUES-M112DGR-12	2.15
CUES-M112DGR-11	3.10



P.C.B Layout t=1.60mm

Top View

A	02/01/07	RELEASED FOR PRODUCTION		DESCRIPTION
REV	DATE			
UNLESS OTHERWISE SPECIFIED, DIMENSIONS ARE IN MM. TOLERANCES ARE:		CAD GENERATED DRAWING, DO NOT MANUALLY UPDATE		
DECIMALS		APPROVALS	DATE	
.X ± .38		DRAWN	Chris	02/01/07
.XX ± .25		CHECKED	Cindy	02/01/07
.XXX ± .20		APPV	Jason	02/01/07
DO NOT SCALE DRAWING		SHEET	1 OF 1	SCALE: NONE
		DWG. NO.	CUES-M11-S01	REV. A



DESCRIPTION: USB+eSATA Plug, 4+7P, Stacked, DIP Type, Red