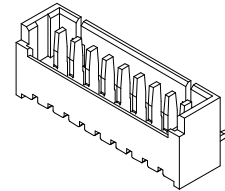
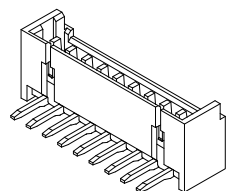
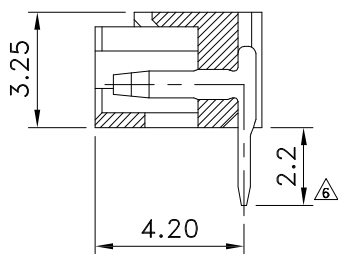
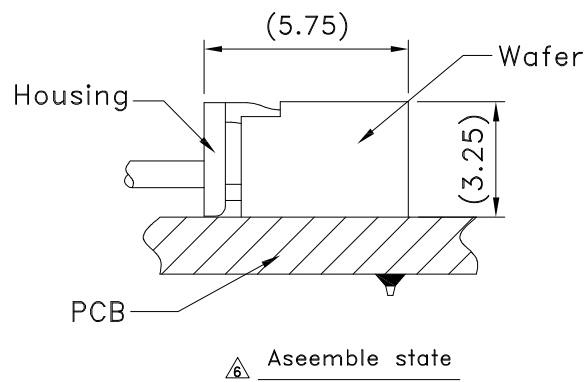
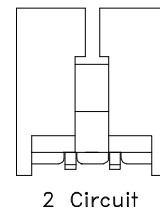
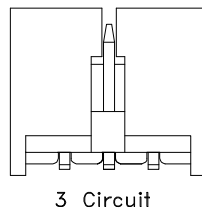
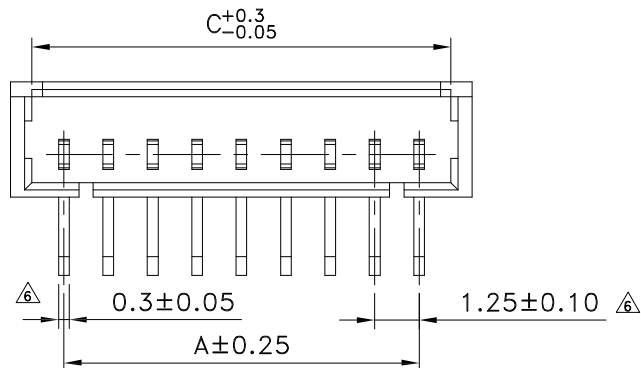
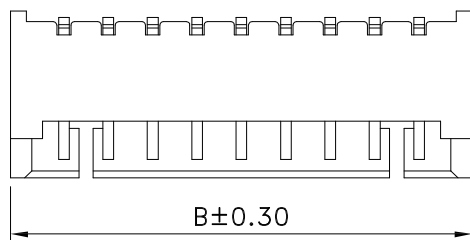


Recommended PCB Layout(Top View)



NOTES:

1. Material:

Housing: Nylon 46, UL 94V-0 Rated.

Color: White.

Contact: Brass.

Plating: Tin Plating over Nickel.

2. Electrical Specification:

Operation Voltage: 125V AC/DC.

Current Rating: 1 Ampere AC/DC per Contact.

Contact Resistance: 20mΩ Max.

Insulation Resistance: 100MΩ Min.

Dielectric Withstanding Voltage: 250V AC per Minute.

3. Environmental:

Operating Temperature: -40°C to +85°C.

Package: 1,000pcs/PVC Box.

Poles	Part Number	Dimensions (mm)		
		A	B	C
2	CW12-M02RDT1-R7	1.25	4.25	3.05
3	CW12-M03RDT1-R7	2.50	5.50	4.30
4	CW12-M04RDT1-R7	3.75	6.75	5.55
5	CW12-M05RDT1-R7	5.00	8.00	6.80
6	CW12-M06RDT1-R7	6.25	9.25	8.05
7	CW12-M07RDT1-R7	7.50	10.50	9.30
8	CW12-M08RDT1-R7	8.75	11.75	10.55
9	CW12-M09RDT1-R7	10.00	13.00	11.80
10	CW12-M10RDT1-R7	11.25	14.25	13.05
11	CW12-M11RDT1-R7	12.50	15.50	14.30
12	CW12-M12RDT1-R7	13.75	16.75	15.55
13	CW12-M13RDT1-R7	15.00	18.00	16.80
14	CW12-M14RDT1-R7	16.25	19.25	18.05
15	CW12-M15RDT1-R7	17.50	20.50	19.30

Part Number:

CW12-MXXRDT1-R7

Wafer 1.25mm Series

M: Male Type

XX: 02~15Pins

R: Right Angle

Product Number:

R7: 1.25mm Wafer, R/A Type

1: White Color

T: Tin Plating

D: DIP Type

A	04/06/11	RELEASED FOR PRODUCTION	
REV	DATE	DESCRIPTION	
UNLESS OTHERWISE SPECIFIED, DIMENSIONS ARE IN MM. TOLERANCES ARE:		 凱聯科技股份有限公司 Conn-Link Technology Inc.	
DECIMALS	ANGLES		
.X ± .38	± 3°		
.XX ± .25			
.XXX ± .20			
DO NOT SCALE DRAWING		SHEET 1 OF 1	SCALE NONE
		DWG. NO.	CW12-MXX-R47
		REV.	A