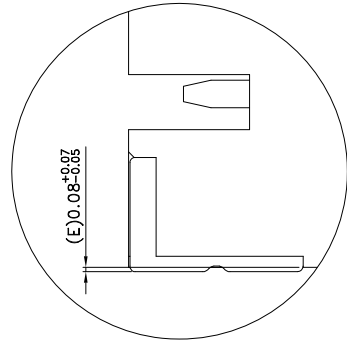
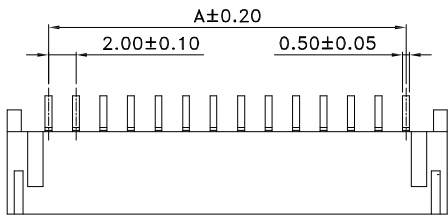
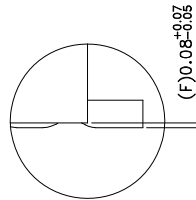


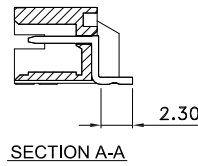
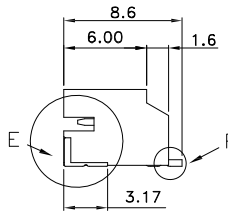
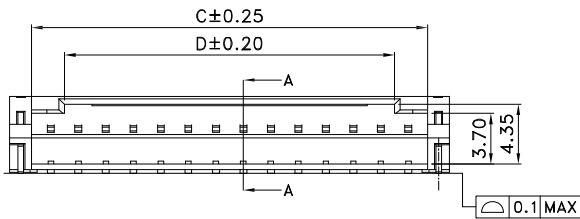
RECOMMENDED PCB LAYOUT DIM.



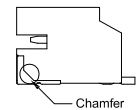
Detail E
SCALE 4:1



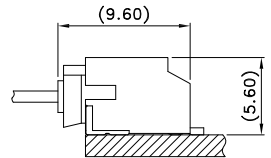
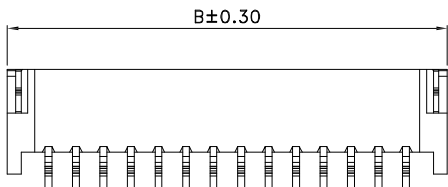
Detail F
SCALE 4:1



SECTION A-A



Material with Halogen Free



RECOMMENDED ASSEMBLY DIM.

NOTES:

1. Material:

- Housing: PA9T, UL 94V-0 rated.
- Color: White.
- Contact: Brass.
- Plating: Tin Plating over Nickel.
- Tin Plating on Solder tail.

2. Electrical Specification:

- Operation Voltage: 100V AC/DC.
- Current Rating: 2 Ampere AC/DC per Contact.
- Contact Resistance: 20mΩ Max.
- Insulation Resistance: 1,000MΩ Min.
- Dielectric Withstanding Voltage: 800V AC per Minute.

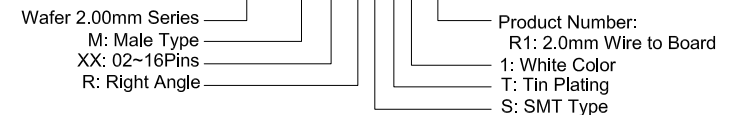
3. Environmental:

- Operating Temperature: -25°C to +85°C
- Package: 800pcs/Reel

Poles	Part Number	Dimensions (mm)			
		A	B	C	D
2	CW20-M02RST1-R1	2.00	8.00	4.80	1.00
3	CW20-M03RST1-R1	4.00	10.00	6.80	2.00
4	CW20-M04RST1-R1	6.00	12.00	8.80	4.00
5	CW20-M05RST1-R1	8.00	14.00	10.80	6.00
6	CW20-M06RST1-R1	10.00	16.00	12.80	8.00
7	CW20-M07RST1-R1	12.00	18.00	14.80	10.00
8	CW20-M08RST1-R1	14.00	20.00	16.80	12.00
9	CW20-M09RST1-R1	16.00	22.00	18.80	14.00
10	CW20-M10RST1-R1	18.00	24.00	20.80	16.00
11	CW20-M11RST1-R1	20.00	26.00	22.80	18.00
12	CW20-M12RST1-R1	22.00	28.00	24.80	20.00
13	CW20-M13RST1-R1	24.00	30.00	26.80	22.00
14	CW20-M14RST1-R1	26.00	32.00	28.80	24.00
15	CW20-M15RST1-R1	28.00	34.00	30.80	26.00
16	CW20-M16RST1-R1	30.00	36.00	32.80	28.00

Part Number:

CW20-MXXRST1-R1



A	04/23/12	RELEASED FOR PRODUCTION	
REV	DATE	DESCRIPTION	
UNLESS OTHERWISE SPECIFIED DIMENSIONS ARE IN MM TOLERANCES ARE:		<p>凱聯科技股份有限公司 Conn-Link Technology Inc.</p> <p>DESCRIPTION Wire to Board, 2.00mm Wafer Connector Right Angle, SMD, 02~16Pins, White</p>	
DECIMALS	ANGLES		
.X ± .38	± 3°		
.XX ± .25			
.XXX ± .20		APPROVALS	DATE
DO NOT SCALE DRAWING	SHEET 1 OF 1	SCALE NONE	DWG. NO. CW20-MXX-R61