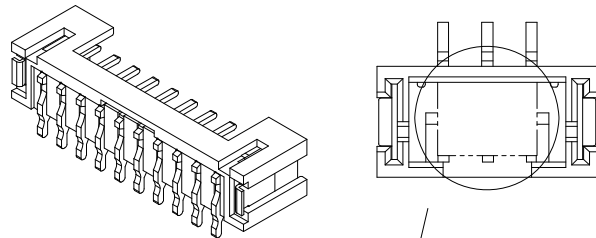
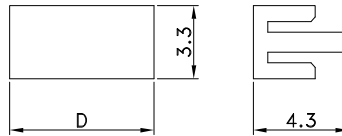


RECOMMENDED PCB LAYOUT DIM.



Cap Dimensions:



NOTES:

1. Material:

- Housing: Nylon 9T, UL 94V-0 Rated.
- Color: White.
- Contact: Phosphor Bornze.
- Plating: Tin Plating over Nickel, Tin Plating on Solder tail.
- Nail Pad: Phosphor Bornze.
- Plating: Tin Plating over Nickel.
- Cap: Nylon PA46, UL 94V-0 Rated.

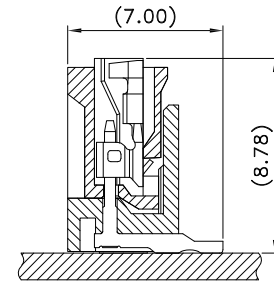
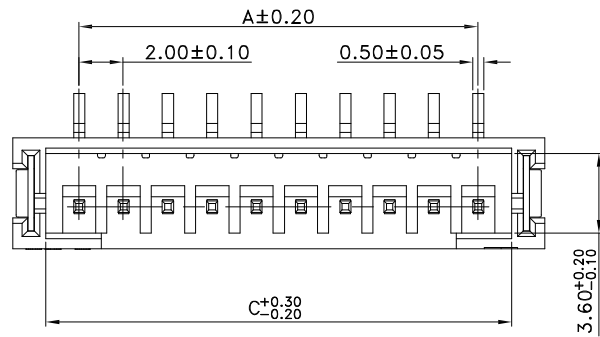
2. Electrical Specification:

- Operation Voltage: 100V AC/DC.
- Current Rating: 2 Ampere AC/DC per Contact.
- Contact Resistance: 20mΩ Max.
- Insulation Resistance: 1,000MΩ Min.
- Dielectric Withstanding Voltage: 800V AC per Minute.

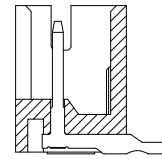
3. Environmental:

- Operating Temperature: -25°C to +85°C
- Package: 800pcs/Reel

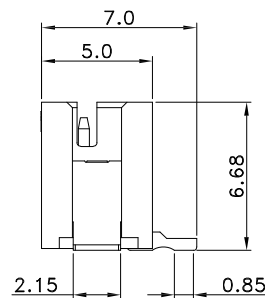
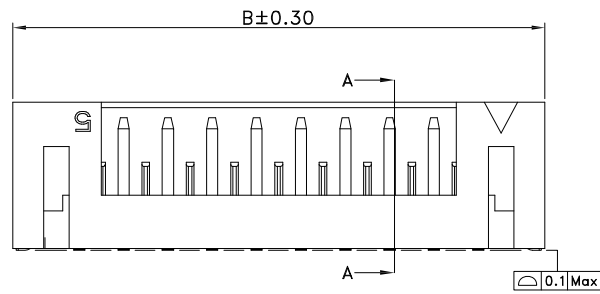
Poles	Part Number	Dimensions (mm)			
		A	B	C	D
2	CW20-M02RST1-R1	2.00	8.00	5.00	4.50
3	CW20-M03RST1-R1	4.00	10.00	7.00	4.50
4	CW20-M04RST1-R1	6.00	12.00	9.00	6.50
5	CW20-M05RST1-R1	8.00	14.00	11.00	6.50
6	CW20-M06RST1-R1	10.00	16.00	13.00	6.50
7	CW20-M07RST1-R1	12.00	18.00	15.00	6.50
8	CW20-M08RST1-R1	14.00	20.00	17.00	6.50
9	CW20-M09RST1-R1	16.00	22.00	19.00	6.50
10	CW20-M10RST1-R1	18.00	24.00	21.00	6.50
11	CW20-M11RST1-R1	20.00	26.00	23.00	6.50
12	CW20-M12RST1-R1	22.00	28.00	25.00	6.50
13	CW20-M13RST1-R1	24.00	30.00	27.00	6.50
14	CW20-M14RST1-R1	26.00	32.00	29.00	6.50
15	CW20-M15RST1-R1	28.00	34.00	31.00	6.50
16	CW20-M16RST1-R1	30.00	36.00	33.00	6.50



RECOMMENDED ASSEMBLY DIM.

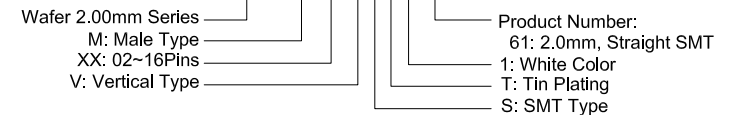


SECTION A-A



Part Number:

CW20-MXXVST1-61



A	09/17/12	RELEASED FOR PRODUCTION		
REV	DATE	DESCRIPTION		
UNLESS OTHERWISE SPECIFIED, DIMENSIONS ARE IN MM. TOLERANCES ARE:		<p>凱聯科技股份有限公司 Conn-Link Technology Inc.</p> <p>DESCRIPTION: Wire to Board, 2.00mm Wafer Connector Vertical Type, SMT, 02~16Pins, White</p>		
DECIMALS	ANGLES			
.X ± .38	± 3°			
.XX ± .25				
.XXX ± .20		APPROVALS	DATE	
DO NOT SCALE DRAWING		DRAWN	Chris	09/17/12
		CHECKED	Cindy	09/17/12
		APPV	Jason	09/17/12
SHEET 1 OF 1	SCALE NONE	DWG. NO.	CW20-MXX-261	
		REV.	A	